



Relaxed Performance Information Pack for Hey Duggee: The Live Theatre Show

Friday 14 April 2023, 3.30pm



Box Office Telephone: 0116 242 3595

Box Office Email: tickets@curvetheatre.co.uk

Address: Curve, 60 Rutland Street, Leicester, LE1 1SB

Contents

Hello and What is a Relaxed Performance?.....	2
Getting to Curve.....	3 - 5
Visual Story: Your Visit to Curve.....	6 - 15
About the Show.....	16
The Actors in the Show.....	17
The Story.....	18 - 21
Changes for the Relaxed Performance.....	22
Things to Look Out For.....	22 - 25
My Visit to see Hey Duggee: Communication Sheet.....	26

Hello!



We are looking forward to welcoming you to **Curve** for the **Relaxed Performance of Hey Duggee: The Live Theatre Show**.

This guide has been created to support audiences attending the show, and contains information about the theatre, performance, characters and story to help you familiarise yourself, and make your experience as enjoyable and memorable as possible.

What is a Relaxed Performance?

Relaxed Performances are open to everyone but are especially tailored to support audiences who may benefit from a more relaxed performance environment. This may include children, young people and adults with neurodivergence, such as autism, learning difficulties and other sensory or communication needs.

The lights will remain on throughout, and whilst the **Theatre** doors will be closed, you will be able to come and go from the space if you need a break from the performance. There will be a relaxed attitude to noise, and sound and lighting will be adapted to more comfortable levels. A quiet space will also be available.

Getting to Curve

Our address is **Curve, 60 Rutland Street, Leicester, LE1 1SB.**

Here is a map of where Curve is in the **Cultural Quarter**, and the surrounding area.



Getting here by Car

There are a number of car parks close to Curve, with the multi-storey NCP Rutland Centre Car Park being the closest to our Theatre. **Customers are advised that none of the car parks detailed on this page are owned or managed by Curve or Leicester Theatre Trust Ltd.**

NCP Rutland Centre Car Park (Multi-storey)

56 Halford Street, Leicester, LE1 1TQ

Access Spaces: 7 | Max Height: 1.93m

Curve visitors can park in the NCP Rutland Centre adjacent to Curve for **£7.95** when validated at Box Office, Green Room Café or Stage Door Bar during your visit.

If parking at NCP Rutland Centre between the hours of 5pm and 2am, you can access a cheaper rate of **£5.95** if you pay via the NCP ParkPass App, or **£6.95** if you pay your parking at the machines located in the NCP on the day.

Southampton Street

Leicester, LE1 1TG

Access Spaces: 4

Hourly charges from **£1***

Haymarket

Leicester, LE1 3HP

Access Spaces: 5

Hourly charges from **£1***

NCP Lee Circle Car Park

Leicester, LE1 3RE

Access Spaces: 4 | Max Height: 1.93m

Hourly charges from **£1.95***

Newarke Street

Leicester, LE1 5SN

Access Spaces: 1

Hourly charges from **£1***

Dover Street

Leicester, LE1 6PW

Access Spaces: 14 | Max Height 1.98m

Hourly charges from **£1***

Highcross John Lewis Car Park

Leicester, LE1 4QJ

Access Spaces: 109 | Family Spaces: 56 | Max Height, 1.98m

Hourly charges from **£3.50***, plus flat evening rate of **£2.50*** between 5pm and 6am.

There is also a drop-off point outside our theatre. *Prices subject to change.

Getting here by Bus

All Leicestershire bus services have stops within a three to 10-minute walk of Curve, with services terminating on Humberstone Gate, Haymarket Bus Station or St Margaret's Bus Station.

For more information about travelling by bus in the city, visit www.leicester.gov.uk/transport-and-streets/travelling-by-bus, or call **Traveline** on **0871 200 2233**.

Getting here by Train

Leicester Train Station is less than a 10-minute walk away via **Charles Street**. For the latest service information, please visit www.nationalrail.co.uk.

Visual Story: Your Visit to Curve

Curve is a large, round building with a glass front. The outside of Curve looks like this:



Halford Street Entrance

what3words: ///wide.wiping.dared

Southampton Street Entrance

what3words: ///seat.olive.quiet

Rutland Street Entrance

what3words: ///driver.other.ideal

There are three main entrances into the building: **Halford Street**, by our **Green Room Café**; **Rutland Street**, by our **Box Office**; and **Southampton Street**, which is in between the two.

All entrances have a set of glass double doors. The doors will open outwards automatically as you move towards them. There is **level access** into the building from both entrances.

Halford Street



Southampton Street



Rutland Street



When you enter the building, you will be in the **Foyer**. Our **Foyer** is one big circle which wraps around two of our performance spaces – the **Theatre** and the **Studio Theatre**.

As you make your way around the **Foyer**, you will notice lots of large pictures on the big red walls. This is our **Production Gallery**, and features pictures from our previous productions.



There are also large digital screens throughout the building displaying upcoming shows and events, and information about the theatre.

What shows can you see in the production gallery and on the screens?



A number of **automatic hand sanitiser points** are available around the building. To use these points, simply hold your hand beneath the dispenser.

Push dispensers are also available around the building.



Before the show, you will hear some loud announcements in the **Foyer** telling you how long it is until the show begins, and other useful information about your visit. These will be at a quieter level at the **Relaxed Performance**.



It may also be noisy in the **Foyer** as other audience members will be arriving to see the show. You might like to **cover your ears** or wear a pair of **ear defenders**, and bring a comforter or toy to play with before the performance.

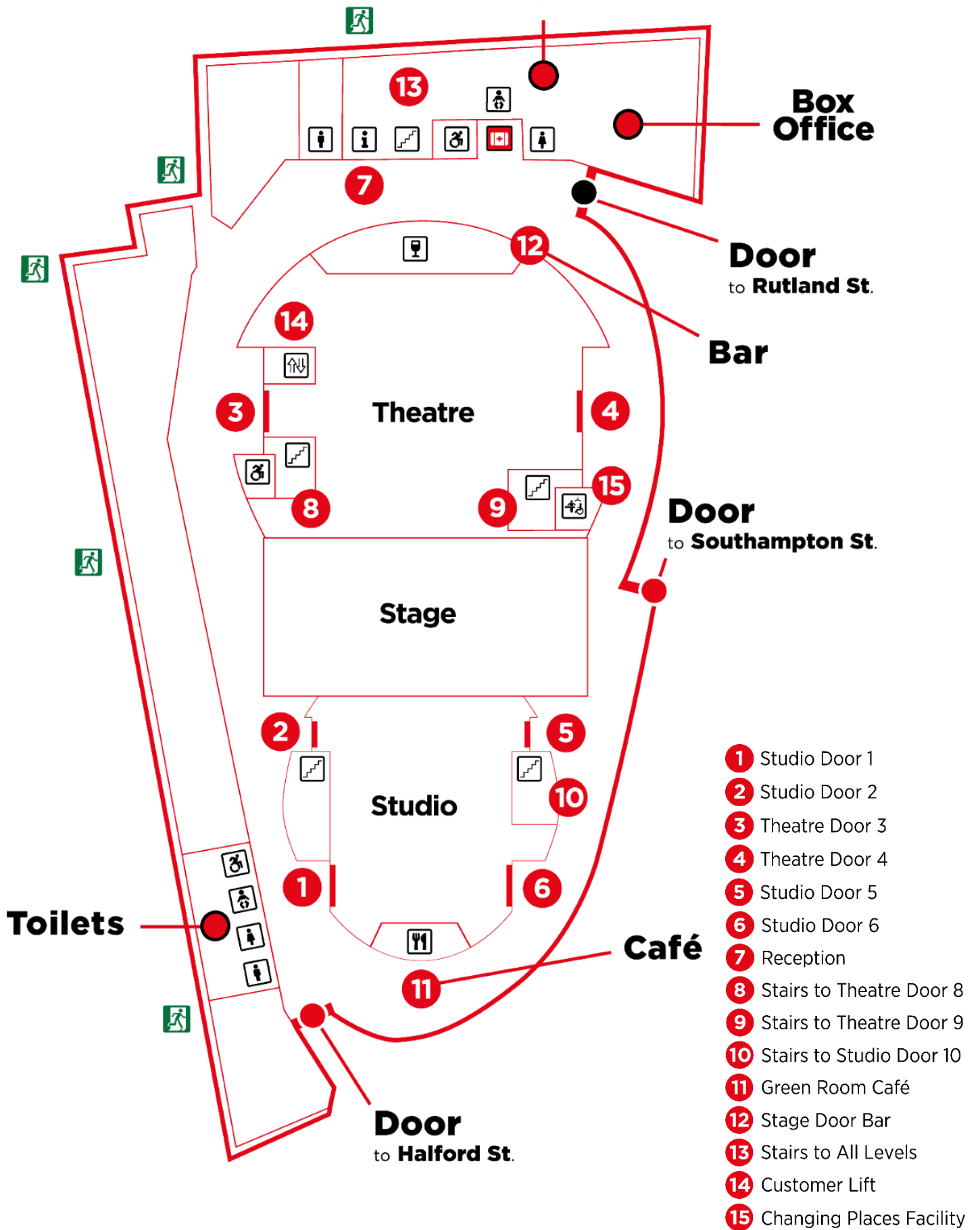


In **Alcove 3**, to the right of **Stage Door Bar**, is our **Ground Floor Quiet Space**. You are welcome to relax in this space before, during or after the performance.

On the tables you will find some sensory toys and activities themed around **Hey Duggee**. You will also find copies of this Performance Information Pack and our Show Communication Sheets.

There is another **Quiet Space** on our **Mezzanine**. You will need to take the stairs next to **Theatre Doors 3** or **4** to access the **Mezzanine**, or the lift next to **Theatre Door 4**. A member of our **Visitor Experience Team** can help you find this space.

Here is a map of the **Ground Floor** of Curve:





Opposite the **Ground Floor Quiet Space**, you will find our **Box Office**.

Parking tickets for cars parked in the **NCP Rutland Centre Multi-storey Car Park** next door to **Curve** can be validated at the **Box Office** for **£7.95**. Ticket enquiries for this performance and future shows at Curve can also be made here.



Further round the **Foyer** you will find our **Green Room Café**.

Here you can buy a drink, snack or ice cream to enjoy before the performance.

There may be a small queue at the **Café**, so you might need to wait a few minutes.



If you need to use the toilet before you take your seats, there are male, female and accessible toilets near both the **Green Room Café** and **Box Office**. Further accessible toilets can be found outside the **Theatre** doors.

Gender-neutral toilets can be found on the **Mezzanine** floor.

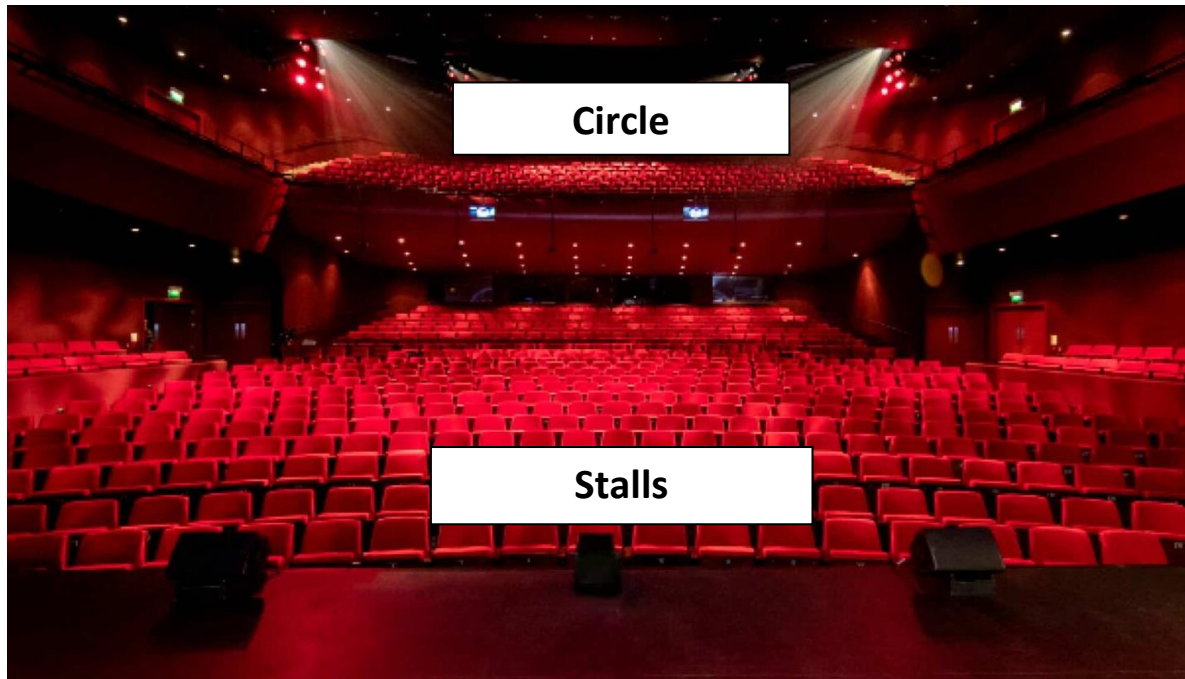
The hand dryers in all toilets will be switched off, and paper towels will be provided. A **R.A.D.A.R key** is also available at the **Green Room Café**, if you don't have one with you.

The toilets look like this:



Our accessible toilet outside **Theatre Door 4** is a **Changing Places Facility**. Please note you will need to bring your own hoist straps to use this facility.

You will be watching **Hey Duggee** in the **Theatre**. Here is a picture of the seats in the **Theatre**. This is where you will sit to watch the performance.



Your **ticket** will tell you if you are sitting in the **Stalls** (Ground Floor, enter through **Theatre Doors 3** or **4**) or in the **Circle** (Mezzanine floor, enter through **Theatre Doors 8** or **9**). Your ticket will also mention which door to enter through and where to sit.

If you are sat in the **Circle**, you will need to take the stairs next to **Theatre Doors 3** or **4**, or the public lift next to **Theatre Door 3** to get to the **Mezzanine** floor (Level M). The staircase next to **Theatre Door 3** has 31 steps over three flights (9, 11, 11) and the staircase next to **Theatre Door 4** also has 31 steps over three flights (13, 7, 11). There is a landing between each flight of stairs.



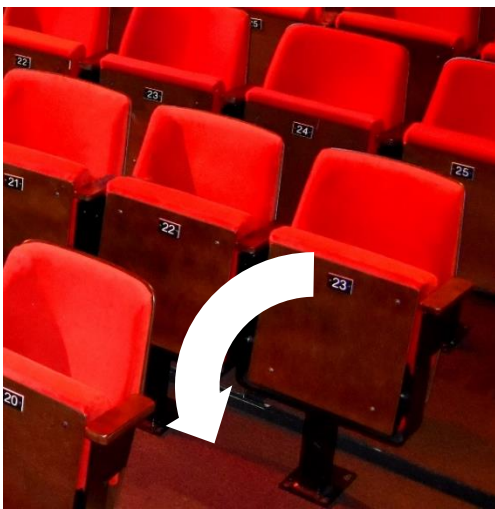
A member of our **Visitor Experience Team** can help you find the right door and your seat by looking at the letters and numbers on your ticket.

They will be wearing black shirts with a colourful Curve logo.

If you are sitting in the **Circle**, you may need to take further steps to get to your seat. There are 22 steps from where you enter through **Theatre Doors 8 or 9** to Row H at the back of the **Circle**, with 2 steps between each row.

If you are sitting on the **Row H balcony** in the **Circle**, you will need to enter through **Theatre Door 11**. Please speak to a member of our Visitor Experience Team, who can help you access the **Theatre** via this door.

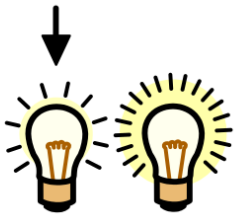
When you enter the **Theatre**, the lights will be on, and it will be noisy as the audience will be excited to see the show! You might like to **cover your ears** or wear a pair of **ear defenders**, and bring a comforter or toy to play with before the performance starts.



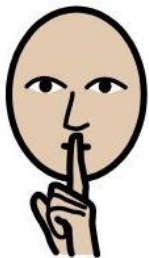
You will need to pull the bottom of your seat down to sit on it.

Booster seats are available if you can't see the stage comfortably, and a member of our **Visitor Experience Team** can get one for you.

They will also be happy to help you with anything else you may need to enjoy the performance.



When the show is about to start, the lights in the **Theatre** will be dimmed but it will never go completely dark. They will remain on at a low-level throughout the performance.

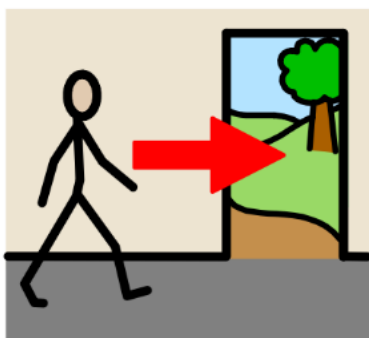


Everyone will be as quiet as they can be so they can listen to the story and music, but you are welcome to interact with the performance if you would like to.

Whilst the inner doors to the **Theatre** will close, the outer doors will remain open throughout so you can leave the space if you need to use the toilet or take a break from the show. You can re-enter when you're ready.



When the show has finished, the cast will come back onto the stage and bow. The audience will clap to show the cast they enjoyed the performance. It can be quite loud during this moment.



At the end of the show, the lights will get brighter again. You can leave the **Theatre** when you are ready.

About The Show

Hey Duggee: The Live Theatre Show is a live performance based on the BBC TV series **Hey Duggee**. **Duggee** looks after a group of youngsters - the **Squirrels** - in his clubhouse, teaching them how to do lots of things. In this production, **Duggee** teaches the **Squirrels** how to put on a theatre show. They meet lots of friends along the way, who all help them to learn something important that they will need to know for the show.

Duggee and the **Squirrels** are represented by puppets. The puppets are operated by puppeteers, who help the puppets move and talk. Some of the friends that the **Squirrels** meet are represented by an actor and some are represented by puppets. You will recognise all of the characters from the TV show.



The Actors in the Show



This is **Jane Crawshaw**
She plays **Norrie** in the show



This is **Benedict Hastings**
He plays **Duggee** and the **Narrator** in the show



This is **Kaidyn Niall Hinds**
He plays **Happy** in the show



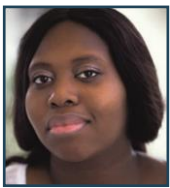
This is **Clarke Joseph-Edwards**
He plays **Roly** in the show



This is **Vinnie Monachello**
He plays **Tag** in the show



This is **Sarah Palmer**
She plays **Betty** in the show



This is **Lunga Anele-Skosane**
She will be playing **Chew**

Chew, Hennie, Mrs Weaver and Chip



Chew Chew

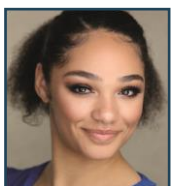


Hennie



Mrs Weaver

Understudies



This is **Shakira Alleyne**
Sometimes, Shakira will play **Chew Chew, Hennie, Chip** and **Mrs Weaver** instead of Lunga.



This is **Charlie Daniells**
If any of the actors playing the **Squirrels** aren't able to perform, Charlie will play that role. She knows all the parts!



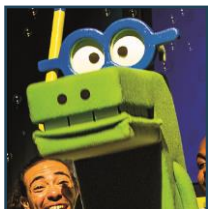
This is **Elliott Samuels**
If the actor playing **Duggee** and the **Narrator** can't perform, Elliott will play that role.

The Story

The section will tell you what will happen in the show. If you want the story to be a surprise, we suggest that you skip to **page 22**. Please don't share these with other people as they might want the surprise. There are parts of the show which will look a bit different to the TV show. This is to tell the story in the theatre.



This is the **Narrator**. He is going to tell us the story and also explain what **Duggee** is saying when he says "Woof!". He comes on to the stage playing a ukulele, which is an instrument a bit like a small guitar.



This is **Happy**. **Happy** is a small crocodile. He is swimming when we meet him, which is his favourite thing to do, apart from going to the Clubhouse with **Duggee** and all his friends!



This is **Norrie**. **Norrie** is a mouse. She is singing when we meet her, but she drops her microphone and runs off when she hears it is time to go to the clubhouse with **Duggee**!



This is **Tag**. **Tag** is a small rhinoceros. He is playing with dinosaurs, but quickly drops them to go to the clubhouse with **Duggee** and the other **Squirrels**.



This is **Betty**. **Betty** is a purple octopus. She is playing with a science kit and making a mini explosion! She stops what she is doing when she hears it's time to go to the clubhouse with **Duggee** and her friends.



This is **Roly**. **Roly** is a small hippo. He is hiding in a hedge and jumps out to scare the **Narrator**! Then he runs off to the Clubhouse to join **Duggee** and his friends.



And this is **Duggee**! Our large friendly dog. He is very happy to see all the **Squirrels**.

Duggee is so happy to see the **Squirrels** that he does a little dance. They all say hello to the audience. The narrator explains that they are going to do a show. **Duggee** will show them how because he has his Theatre Badge!

The **Squirrels** realise they don't have any instruments to make music. **Duggee** shows them how to make music just using their mouths to make different sounds. This is called 🎵 **A Cappella**. Everyone in the audience can join in! Then **Chew Chew** the panda arrives to help. Everybody sings together. Then **Chew Chew** goes home to eat some biscuits. The **Squirrels** have earned their A Cappella Badge.

The **Squirrels** talk about what else they'll need to put on a show. **Roly** would like an egg. **Duggee** can help because he has his Egg Badge! But the chickens are all asleep so there aren't any eggs. **Hennie** the Ostrich arrives. She helps the chickens exercise to wake them up. Everybody in the audience can join in with the exercises. The chickens lay lots of eggs and everybody has to help find them all. The **Squirrels** have earned their Egg Badge.

The **Squirrels** need to learn to sing. **Duggee** starts to teach them a song, but they are so noisy, they have woken up **Mrs Weaver** the Beaver. She sings them a song. Everybody can join in with the song. Then **Mrs Weaver** leaves to put her cubs to bed. The **Squirrels** have earned their Singing Badge.



Duggee shows the **Squirrels** his telescope. The **Narrator** explains that it is for looking at the stars – **Duggee** knows all about them because he has his Space Badge. Giant planets appear and the **Squirrels** send them bouncing into the audience. The **Narrator** explains which planets they are.

The **Squirrels** want to go into space. **Duggee** shows them a rocketship and they all blast off into space. They see lots of amazing things, and then they decide to return home. As they get closer to Earth, they can see lots of familiar sights, including the Clubhouse. All of the **Squirrels** have earned their Space Badge!

Duggee is going to teach the **Squirrels** to Dance. **Chipo**, a Cheetah, appears. **Chipo** complains that **Duggee** used to make up his own dance moves so he had to leave their dance crew. The **Squirrels** like **Duggee**'s dancing as it is so much fun. **Chipo** and **Duggee** have a dance competition and **Chipo** just can't help dancing along with **Duggee** because it is so much fun. The audience can join in with the dance moves too. Everybody has earned their Choreography Badge.

Now the **Squirrels** need costumes for their show. **Duggee** has his Costume Badge, so he can help. They all make clothes and show them off on the catwalk. The **Squirrels** have earned their Costume Badge!



Now the **Squirrels** have everything they need to put on their show, but they still need to get to the theatre. **Duggee** says they will walk. They sing a song about walking. All their friends come back to help them sing and walk to the theatre, plus a couple of new friends – **John** and **Nigel**, the **crabs**, and **Boris** the Penguin.

The **Squirrels** have reached the theatre. It's time for the show! The **Squirrels** get ready for the show. **Duggee** gets his top hat and cane, so he is ready too. They all start to sing the 🎵 **Showtune Song**, welcoming everyone to the show. Then **Duggee** throws his cane off to the side of the stage and it is caught by... a giant

stick with eyes! Stick appears onstage, holding **Duggee**'s cane. The lights start to flash like we are all in a night club and everybody sings the 🎵 **Stick Song**.

Suddenly the music stops! The **Squirrels** need music to finish the show. Luckily, all of the audience have been taught how to sing a cappella so everybody can help the **Squirrels** save the show by making music. Everyone can join in with the dancing too!

The **Squirrels** aren't ready to finish the show just yet. They want to sing one more song. They sing the 🎵 **Walking Song** again.

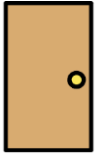
Duggee has a surprise for the **Squirrels**. An Egg appears! Everyone dances with the Egg. All the audience members can take their Chicken paddles out of their programme, if they have one, and wave it.

That really is the end of the show. Everybody has earned their Theatre Badge and **Duggee** pulls a giant Theatre Badge down from the ceiling on a rope for everyone to see.

We hear a car horn beep - the **Squirrels**' parents have arrived to take them home. Everybody has earned lots of badges today! There's always time for one more thing – **Duggee** hug! Everybody on stage takes a bow and waves goodbye to the audience.



Changes for the Relaxed Performance



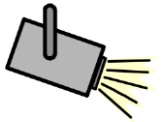
There will be an open door policy throughout the show so that you can come and go as you need to.



The show is about 55 minutes long. There is no interval.



The production contains loud music, sound effects and audience interaction.



The house lights will stay on throughout the performance.

Things to Look Out For

The **Hey Duggee** team have adjusted some elements of the show for the relaxed performance including:

- Lowering the sound levels throughout the show
- Keeping the house lights will be kept on at 50% throughout
- In other shows, we throw big inflatable balls into the audiences, fire a confetti canon and spray the audience with a tiny bit of water, but we won't do that on the relaxed show

These are some points in the show where things are loud or lights flash. It may be helpful to know about these moments in advance, as follows:

Roly is a very enthusiastic young hippo and he shouts a lot when he gets excited (which is all the time!).

Whenever the **Squirrels** earn a badge, there will be a loud “Ping” sound.

The **Narrator** will often ask the audience to join or to shout out, and this might get quite loud.

Parts of the edge of the stage have lights in, and these will light up and flash occasionally.

The **Narrator** plays a bit of the **Hey Duggee** theme music on a ukulele. The music from the TV theme music joins in and gets louder and louder, whilst all the **Squirrels** are introduced. It will stop after **Duggee** appears – he is last, after all the other **Squirrels**.

Happy appears accompanied by splashing noises and bubbles.

Betty appears with a science kit that makes bubbling noises. There is a mini explosion and confetti bursts out of the science kit, into the air. It's not a real explosion – don't worry!

Roly is hiding behind a bush to surprise **Duggee** – he jumps out and yells "Duggee!" to surprise him.

The **Narrator** asks everyone in the audience to say a big "Hello!" – this might be quite loud.

When **Duggee** points at his Theatre Badge, there will be loud "Ping" sound. This also happens every time the Squirrels earn a badge.

Duggee gets a big drum from his DJ station and bangs it twice. **Roly** copies the sound.

Duggee plays two cymbal crashes. **Tag** copies the sound.

Duggee plays four notes on a trumpet. **Betty** copies the sound.

Duggee plays a high note on a mini piano. **Happy** copies the sound.

Duggee plays some notes on a ukulele. **Norrie** copies the sound.

Duggee makes lots of sounds and asks the **Squirrels** and all the audience to copy them: maracas shaking, slurping a drink, clapping, clicking, stamping and singing a high-pitched "A-woof!", and then a low-pitched "A-woof!". You can join in if you'd like to.

The **Squirrels** start to sing 🎵 **Boots and Cats** a cappella – it becomes a catchy song. You can join in if you'd like to.

The doorbell rings – it’s quite a loud ring as it has to be heard over the song that everyone is singing. It’s **Chew Chew** the panda at the door!

Chew Chew sings a bit of 🎵 **I Dreamed a Dream** from Les Misérables – she is very loud!

They all sing 🎵 **Boots and Cats** again together but this time as 🎵 **Boots and Pandas** – the audience can join in again, and you can too!

Hennie asks **Duggee** to play some exercise music and everyone can join in with the **Squirrels** doing the exercises. You can join in too, if you’d like to.

Hennie asks all of the audience to help her find the eggs that are hidden all over the stage - there may be lots of shouting and calling out as everybody points out the eggs. You can point out the eggs too, if you like.

Roly juggles some eggs and they turn into birds and fly away, tweeting the 🎵 **Hey Duggee Theme Tune**.

Duggee and the **Squirrels** sing a loud, raucous rendition of 🎵 **A Big Old Doggie Dog** to the tune of 🎵 The Grand Old Duke Of York.

Mrs. Weaver sings the 🎵 **Singing Song**, starting with a loud “Yeah!”. All the **Squirrels** and the audience can join in and it may be quite loud.

The **Squirrels** fly into Space on their Rocket Ship and it will get a bit darker, but the house lights will stay on.

Electro music plays whilst **Chipo** the Cheetah challenges **Duggee** and his **Squirrels** to a dance off!

While the **Squirrels** are making their costumes, they will make a lot of mess with material flying everywhere, but it will be cleared up later.

Lights will light up along the sides of the catwalk that the **Squirrels** will walk down.

Mrs. Weaver starts the song 🎵 **One Foot In Front Of the Other (Step By Step)** and all the **Squirrels** join in. Lots of their friends also come and sing with them, and the audience can sing too.

Now the **Squirrels** have arrived at the theatre, some fog will appear to make it exciting – it is not smoke but just created by dry ice. A red curtain will be drawn across the stage to look like a theatre curtain.

The lights will go down and all the **Squirrels** and **Duggee** will be in shadow. This is also to make it exciting as the **Squirrels'** show is about to start.

Tag will introduce each **Squirrel** and they will appear between the curtains in a spotlight, one by one.

The **Squirrels** sing a brand new song written just for this show!

Duggee comes through the curtains and does a tap dance and then **Stick** arrives.

The lights start to look like a nightclub – the main lights will get darker and some flashy lights will go on and off.

The famous 🎵 **stick song** will play and all the lights will flash and the **Squirrels** will dance – it will be quite loud.

All the music will suddenly turn off – we need the audience to save the show by cheering; singing all of the songs and joining in with the dance steps you have already seen. We will go back through all of the songs – 🎵 **Boots and Cats**, the dance steps 🎵 **Rabbit**, 🎵 **Jelly Hummingbird** and 🎵 **Washing Machine**; and then 🎵 **One Foot In Front Of The Other**. All the lights and music will come back on and the show can start up again!

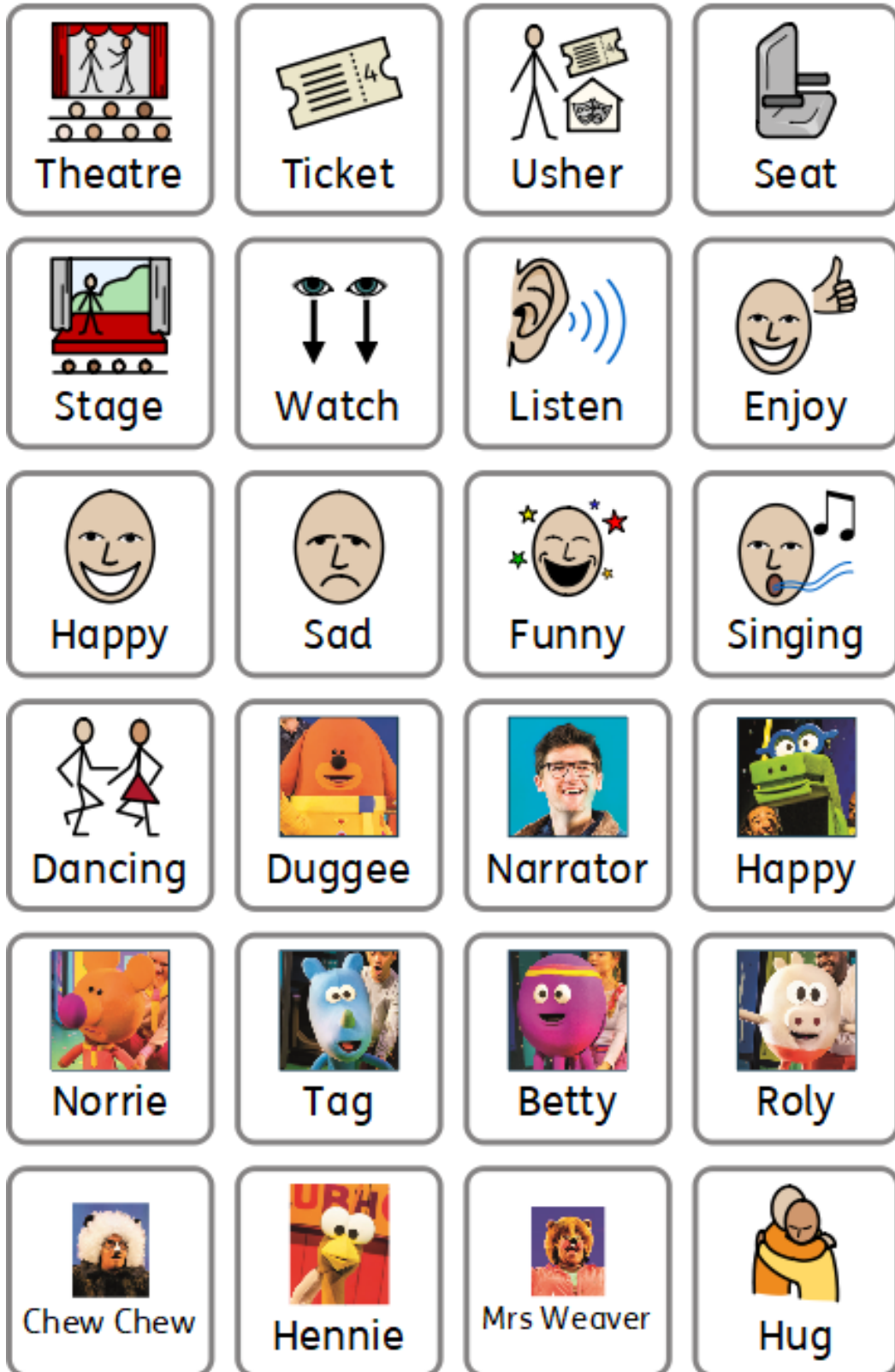
Duggee has a surprise – a giant Egg will come on stage and do a little tap dance.

🎵 **The Stick Song** will be played again but this time it is the Egg song! Everyone on stage will dance and sing. All the audience can join in. It may be quite loud. The Egg wants everybody in the audience to clap. You can clap too if you'd like to.

Car horns will toot – it is the **Squirrels'** parents arriving! Just time for one more thing... Duggee Hug!

Everybody on the stage will bow, and you can clap if you'd like, to let them know you enjoyed the show. The lights will come back on and all the audience will leave the auditorium.

My visit to see Hey Duggee





We hope you find this information pack helpful ahead of your visit to Curve. Enjoy the show!

If you have any comments on this information pack, please email us on **access@curvetheatre.co.uk**.

For more information about Accessibility at Curve, please visit **www.curveonline.co.uk**, or call our **Box Office** on **0116 242 3595**.

We look forward to welcoming you.

This information pack was created by Nicola Allen, Audiences and Access Officer at Curve, with support from Kenny Wax Family Entertainment.