



Technical Specifications – Rehearsal Room 2

Updated Feb 2022

Curve and LTT cannot be held responsible for any costs incurred resulting in information, assumptions or omissions from this document. It is the responsibility of the visiting company to check critical dimensions before commissioning scenery. Please check the availability of equipment before planning productions around it.



REHEARSAL ROOM 2

CURVE TECHNICAL SPECIFICATIONS & EQUIPMENT LISTS

CONTACT DETAILS

Reception 0116 242 3560

Technical Department

Technical@curvetheatre.co.uk

0116 242 3586

ACCESS

PARKING

There is no private car parking on site, but Rutland Centre NCP car park is next door and an all day special parking rate is available at the theatre (please get your ticket validated at Curve Café Bar). Sat Nav users should use LE1 1TQ for Rutland Centre NCP

GET IN

Curve is accessed via Vestry Street for the purpose of unloading and get outs

Rehearsal Room two is on the first floor and accessed by a standard passenger lift measuring 900mm wide x 2100mm high x 2000mm deep

Larger items can be taken to the room via the stairs, of which the smallest opening is 1040mm wide x 2200mm high

DRESSING ROOMS

A dressing room is located behind the performance area, equipped with accessible bathroom and shower. Access is limited to RR2 users and a key is available from reception.

STAGE

The floor is a semi sprung dance floor and screwing down is **NOT** permitted. The stage is level with the front row of the audience and can be covered with a black Harlequin dance floor (please advise at least four weeks in advance if this is required).

The space has trackable black drapes on all sides, which may be open or closed. There is a mirror running the full length of the stage left wall, with a ballet barre.

LIGHTING EQUIPMENT

Rehearsal room 2 has a fixed and pre focused lighting rig, mostly comprising ETC ColourSource pars. Lanterns cannot be moved to a new location, however they may be re-focused. Any change of focus must be returned to standard as part of the strike. Any work on ladders will requires a member of visiting company to foot the ladder.

POWER

1 x 63 Amp 3 phase supply in Dressing Room (**Supplies fixed rig.**)

N.B – There is no cable access into the Studio, in-house socca patch must be used.

6 x 13 Amp outlets in grid, non-switched

2 x 13 Amp technical power outlets at floor level on stage

DIMMING

There are 24 Dimmers patchable through any soca line.

Use of dimmers requires the 63A power supply.

6 x soca patches to the grid – 4 ways are used for fixed LED rig.

3 x soca patches to the floor level

CONTROL

1 x Programmable Lighting Control Desk ETC Element

2 x LCD Monitors (Not Touch Screen)

LANTERNS

Please see attached fixed rig plan. Any additional lanterns should be requested before arrival.

SOUND EQUIPMENT Rehearsal Room 2

POWER

13amp clean power supply available inside RR2

DESK

Yamaha MG166C

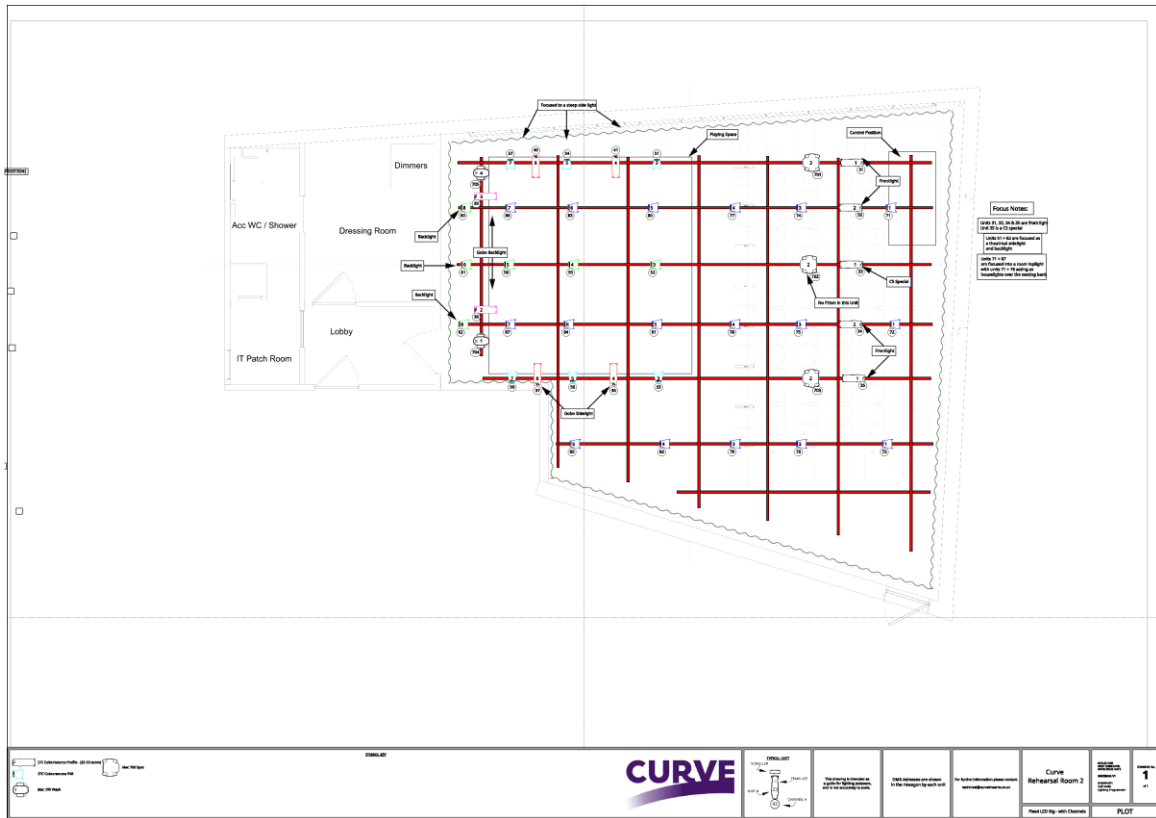
SPEAKERS

2x Electro Voice ELX115P (On Stands)

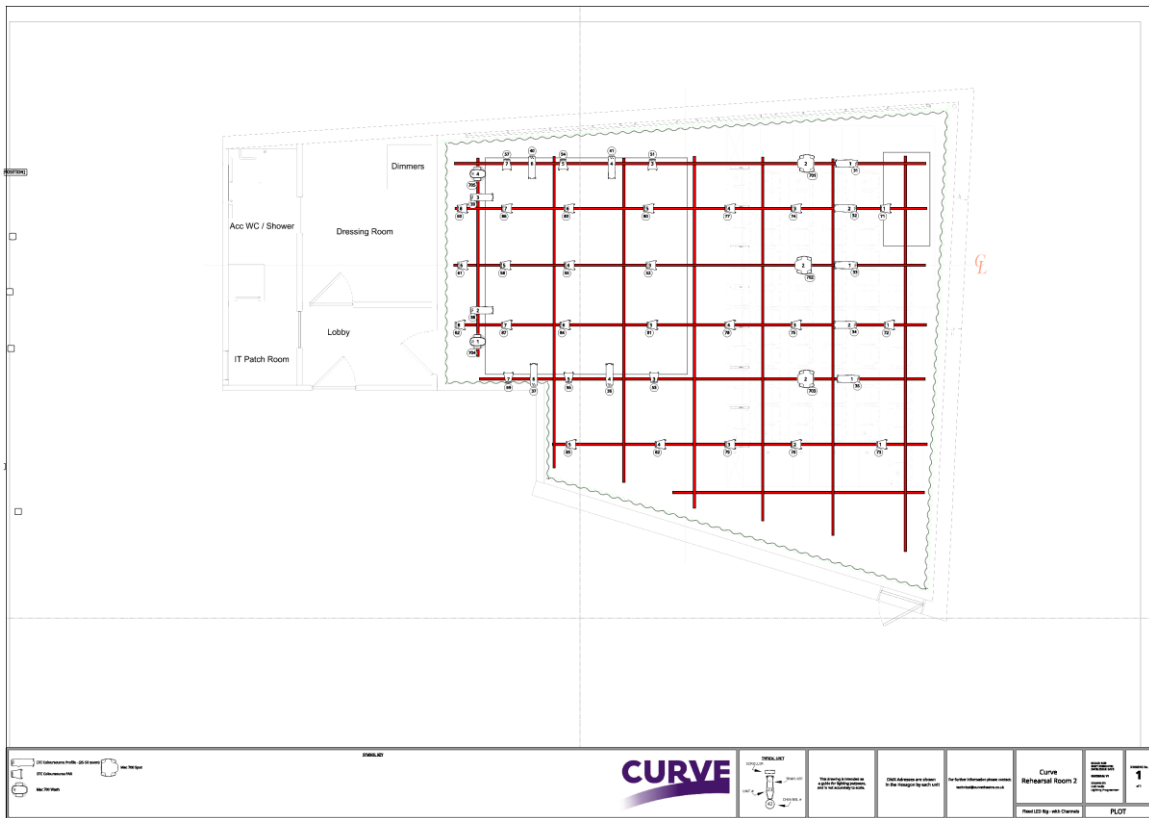
GENERAL

16x tie lines from playing space to mix position

XLR to Mini Jack Adaptor at Mix Position



Plan annotated with focus description



Plan with lantern channel numbers