

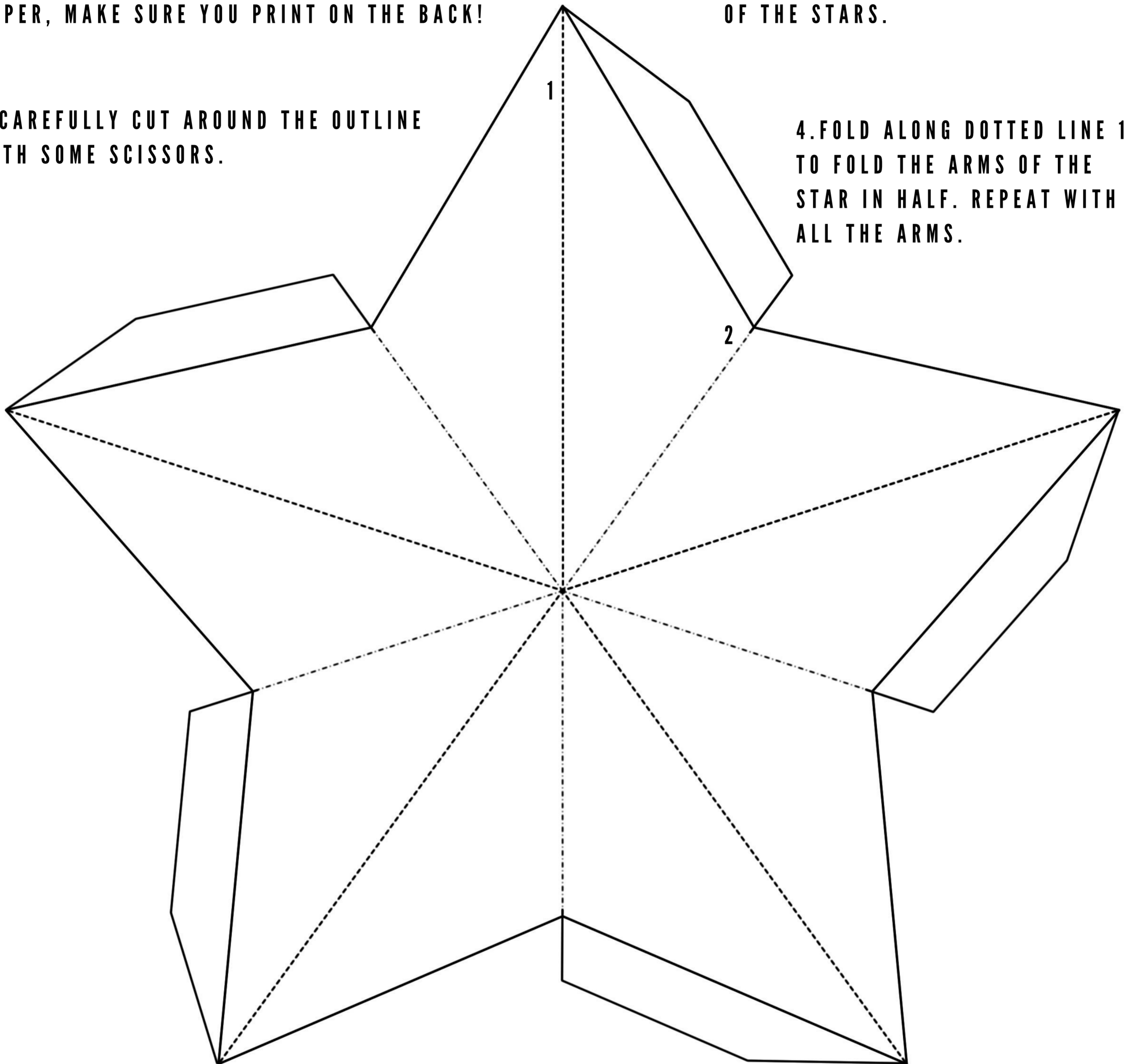
# LIGHTS FOR LEICESTER *stars*

1. PRINT THIS PAGE OFF TWICE. YOU CAN PRINT ON CARD, PLAIN PAPER OR COLOURED PAPER. IF YOU ARE PRINTING ON POSH PAPER, MAKE SURE YOU PRINT ON THE BACK!

2. CAREFULLY CUT AROUND THE OUTLINE WITH SOME SCISSORS.

3. FOLD OVER THE TABS ON THE ARMS OF THE STARS.

4. FOLD ALONG DOTTED LINE 1 TO FOLD THE ARMS OF THE STAR IN HALF. REPEAT WITH ALL THE ARMS.



5. FOLD DOTTED LINE 2 THE OTHER WAY - REPEAT ALL THE WAY ROUND.

6. UNFOLD THE TABS ON THE ARMS OF THE STAR AND PUT GLUE ON THEM.

7. STICK THE TWO STARS TOGETHER, BACK TO BACK. GENTLY SQUEEZE THE ARMS SO IT BECOMES 3D.

8. DECORATE YOUR STAR - MAKE SURE IT SAYS 'LIGHTS FOR LEICESTER'!

8. HANG UP YOUR STAR IN YOUR WINDOW FOR EVERYONE TO SEE.

9. TAKE A PHOTO AND SHARE IT ONLINE, USING THE HASHTAG #LIGHTSFORLEICESTER. DON'T FORGET TO TAG US.

