

CURVE

*Irving
Berlin's*

White Christmas

THE MUSICAL



MADE AT CURVE IN ASSOCIATION WITH JAMIE WILSON

IRVING BERLIN'S WHITE CHRISTMAS

BASED UPON THE PARAMOUNT PICTURES FILM WRITTEN FOR THE SCREEN BY NORMAN KRASNA, NORMAN PANAMA AND MELVIN FRANK

MUSIC AND LYRICS BY **IRVING BERLIN**

BOOK BY **DAVID IVES** AND **PAUL BLAKE**

ORIGINAL STAGE PRODUCTION DIRECTED BY **WALTER BOBBIE** PRESENTED BY SPECIAL ARRANGEMENT WITH R&H THEATRICALS EUROPE
PRODUCED BY **MICHAEL TAYLOR** DIRECTED BY **DAVID PEARCE** MUSIC BY **MARK HENDERSON** COSTUME DESIGNER **TOM MARSHALL**
DESIGNED BY **LARRY BLANK** HAIR BY **BRUCE POMADAC** MAKEUP BY **JASON CARR** STYLING BY **STEPHEN BROOKER** PROP STYLING BY **HELEN MACDONALD**

**Relaxed Performance
Information Pack**
Saturday 12 January, 2.15pm

Contents

Page 3 - 4	About Curve
Page 5	Map of Curve
Page 6 - 7	The Performance
Page 8	The Story
Page 9 - 10	The Cast
Page 11 - 12	Production Images
Page 13	Back Cover
Page 14	Feedback Form

Hello

We are looking forward to welcoming you to Curve for the **Relaxed Performance** of Irving Berlin's ***White Christmas***. We hope that you are excited to see the show!

Our Relaxed Performances are tailored for customers who benefit from a more informal performance environment. Audience members are allowed to make noise, and to come and go from the auditorium if they need to take a break from the performance.

This pack is designed to give you a bit more information about the show, and what to expect during your visit to Curve.



About Curve

Curve is a large, round building with a glass front. There are three main entrances into the building – one by our **Green Room Café** (Halford Street), another by our **Stage Door Bar** (Rutland Street) and the third is in the middle of the two (Southampton Street).



Our **Foyer** is one big circle which goes around our two performance spaces – the **Theatre** and the **Studio** – so it's easy to find your way around.

As you walk around our Foyer you will also notice lots of large pictures on the big red walls. This is our **Production Gallery**, and features pictures from previous productions here at Curve. You can pick up a gallery guide from the leaflet racks around the building to learn more about the shows included in this exhibition.



Just off the Foyer inside the Rutland Street doors, you will find our **Box Office**. You can collect your tickets for the show here if you haven't already printed them, and this is also the place to validate your car parking ticket at a reduced rate of £5.50 (if you have parked in the NCP Rutland Centre Car Park).



In the Foyer you will also find our **Green Room Café** and **Stage Door Bar**, which sell a range of food, drinks and treats to enjoy during your visit.



You can find toilets on all levels of the building. On the ground floor (Stalls level), male, female and accessible toilets are located between our **Stage Door Reception** and **Box Office**, and close to our café. There are two more accessible toilets, one by **Theatre Door 3** and one by **Theatre Door 4**.

The accessible toilet by **Door 4** is also a **Changing Place Toilet**, which has an adult changing table and assistive hoist. Hand dryers will be turned off in the toilets to reduce noise on the day, and paper towels will be provided.

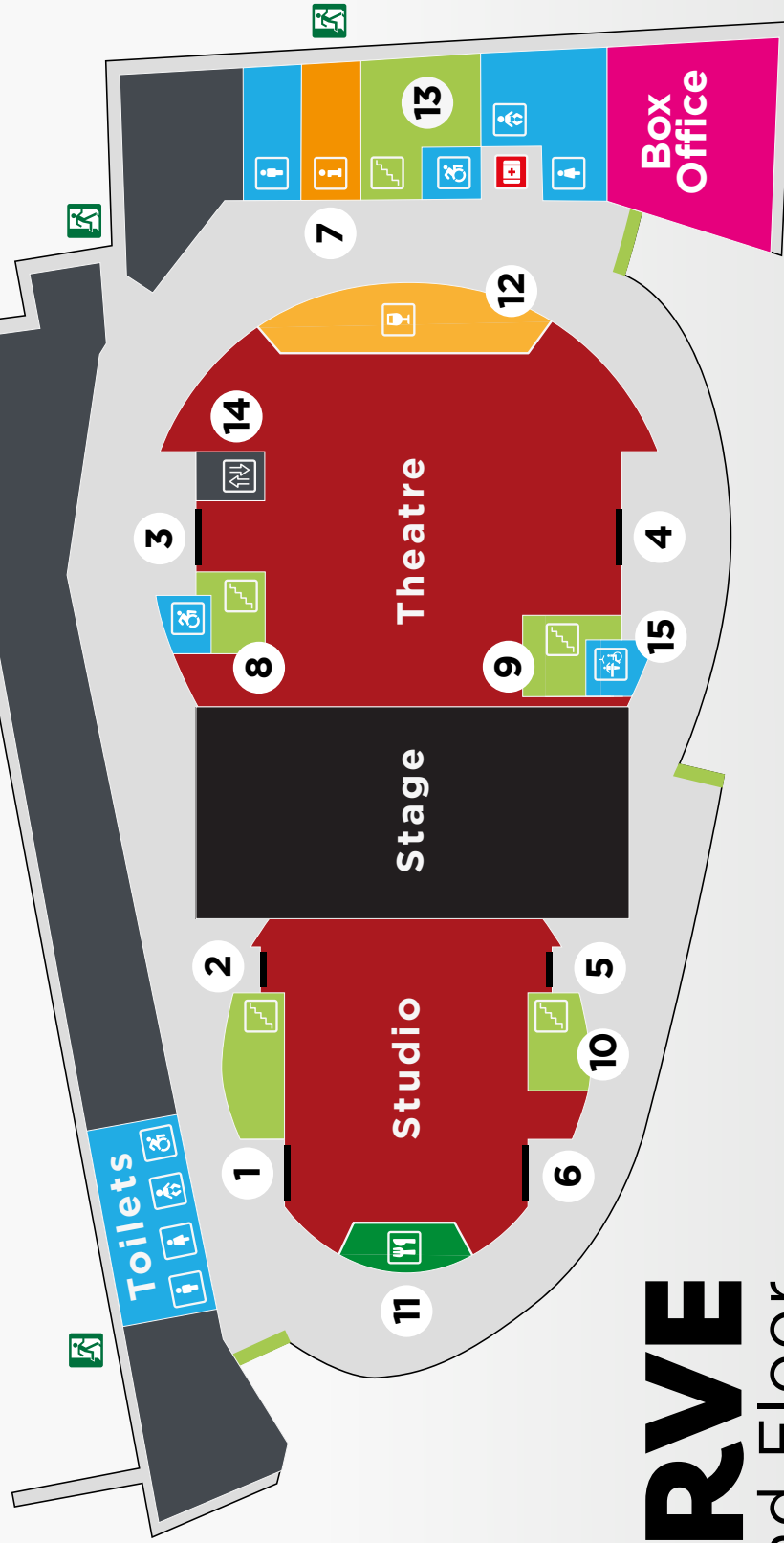
On the first floor (Circle level), male, female and accessible toilets are located near the stairwell.

To get to the first floor (Circle level), you can either use the stairs located next to our **Stage Door Reception, Door 3** or **Door 4**, or take the lift by **Door 3** (select 'M').

See page 5 for a map of our theatre.

NCP

Car Park



CURVE

Ground Floor

1 Studio Door 1

2 Studio Door 2

3 Theatre Door 3

4 Theatre Door 4

5 Studio Door 5

6 Studio Door 6

7 Reception

8 Stairs to Theatre Door 8

9 Stairs to Theatre Door 9

10 Stairs to Studio Door 10

11 Green Room Café

12 Stage Door Bar

13 Stairs Mezz & RR2

14 Lift

15 Changing Places Facility

The Performance

Before the show

Before all of our shows, we make audio announcements in the Foyer to give customers useful information such as how long it is until the show begins and where to take car parking tickets to be validated. During a Relaxed Performance, we will only make necessary announcements and these will be at a lower volume than normal.

This performance of ***White Christmas*** will take place in our **Theatre**. The Theatre is our largest performance space here at Curve, but still has a comfortable and friendly atmosphere. You will either be sat in the Stalls (the lower part of the Theatre) accessible from the Foyer via Door 3 or 4, or in the Circle (the upper part of the Theatre) accessible via Door 8 or 9. Your ticket will tell you which door to enter through, but if you need any help our Visitor Experience Team will be on hand to point you in the right direction.

The Theatre doors will be opened much earlier than usual to give you a chance to explore and settle into the space.

If you have bought a drink from the café or bar, you are welcome to bring this into the Theatre with you. If your drink is in a glass or glass bottle, please ask a member of our Hospitality team to pour this into a plastic cup before entering the auditorium. If you're warming up with a hot drink, please ask for a lid instead.

Inside the Theatre

When you first go into the Theatre, the lights will be on so that you can find your seats easily. Your seat will be shown on your ticket, indicated by a letter and a number (for example J4, D7 etc). When the performance is about to begin, we will dim the lights but it will never go completely dark.

It can be a little noisy whilst people are entering the Theatre and finding their seats, as the audience will be excited to see the show. You might like to bring some ear defenders to wear during this time to make the noise levels more comfortable, as well as toys to play with before the performance.

Just before the show starts, some of the actors will come on stage and say hello. This reminds the audience that the cast are just actors having fun whilst telling you a brilliant story through words, song and dance.

During the show

The main thing to remember about a Relaxed Performance is that no one has to sit still and be quiet, and you are welcome to make noise if you'd like.

You can leave the Theatre at any time during the performance. A member of our Visitor Experience Team will always be at the door to help you exit the auditorium, and will let you back in when you are ready to return to the show. If you would like to have a break from the show, you can visit our quiet space on the Central Mezzanine on level 'M'.

Useful information about the performance

White Christmas is a musical, so there will be lots of singing and dancing. A range of instruments will be played live by a band throughout the show as the cast bring the story to life, however this will be at a quieter level than other performances.

The running times for the performance are as follows:

Act 1 – 1 hour 15 minutes

Interval – 20 minutes

Act 2 – 50 minutes

Total running time: 2 hours & 25 minutes



White Christmas

The Story

White Christmas is based on the 1954 American musical film of the same name starring Bing Crosby, so you might find it helpful to watch the film to get an idea of the story and its characters.

Here is a simple summary of the show. It's important to remember that the actors are playing parts to tell the story, so if you see people looking sad or upset, don't worry – the actors are only pretending.

White Christmas is about two ex-army friends **Bob Wallace** (played by Danny Mac) and **Phil Davis** (played by Dan Burton) who now have a successful song-and-dance act that they perform regularly on Broadway in New York. Bob and Phil met under the command of **General Henry Waverly** (played by Garry Robson) during World War II.

Bob and Phil come across two beautiful up-and-coming singing sisters, **Betty Haynes** (played by Emma Williams) and **Judy Haynes** (played by Monique Young). With romance in mind, Bob and Phil decide to join Betty and Judy as the girls head to their Christmas show instead of their original plans to go to New York and rehearse their latest show.

The girls' show is hosted at a Vermont lodge – the Columbia Inn – owned by General Waverly! It turns out that the lodge has fallen on hard times as there has been no snow and therefore no paying guests. General Waverly has spent his entire life savings on running the lodge.

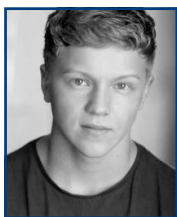
To help General Waverly and to thank him for all he did for Bob and Phil when they were in the army, the duo bring their show from New York to the lodge in the hope that guests will come and see it, despite no snow, and thus bring in some money.

The boys add Betty and Judy into the show, and romance ensues. Bob likes Betty and Phil likes Judy. A misunderstanding happens and it leads to an argument between Bob and Betty, so Phil and Judy have to try and get them back together.

The show ends on a happy, festive note – love is in the air, and so is snow. The lodge just might be saved!

This is a tale of friendship, camaraderie, hope and the pursuit of happiness, told through spectacular dance routines and some of the greatest musical theatre songs ever written.

The Cast



**MICHAEL
ANDERSON**
MARTY



**DELYCIA
BELGRAVE**
RITA



**CHANTEL
BELLEW**
LORETTA



**WENDY MAE
BROWN**
MARTHA WATSON



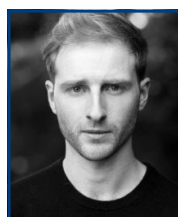
**DAN
BURTON**
PHIL DAVIS



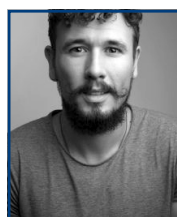
**LUKE
BYRNE**
MARK



**SOPHIE
CAMBLE**
GALE



**ROGER
DIPPER**
RALPH SHELDRAKE



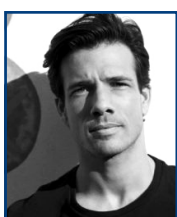
**NICHOLAS
DUNCAN**
JIM



**DAVIDE
FIENAURI**
SCOOTER



**NIA
JERMIN**
GLORIA



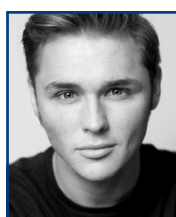
**DANNY
MAC**
BOB WALLACE



**ROBBIE
MCMILLAN**
DEAN



JO MORRIS
CONNIE & ASSOCIATE
CHOREOGRAPHER



**SAM
MURPHY**
MIKE



**GARRY
ROBSON**
GENERAL HENRY
WAVERLY



**ALEX
TRANTER**
JIMMY



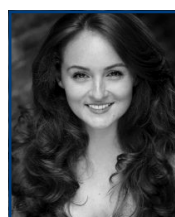
**SI N TUDOR
OWEN**
EZEKIEL FOSTER



**ALEXANDRA
WAITE-ROBERTS**
TESSIE



**EMMA
WILLIAMS**
BETTY HAYNES



**BLEU
WOODWARD**
RHODA



**MONIQUE
YOUNG**
JUDY HAYNES



**ELLIE
COPPING**
SUSAN WAVERLY



**LUCIE
ELLARD**
SUSAN WAVERLY



**MACY
GRUNDY**
SUSAN WAVERLY



**GEORGIA
STEWART**
SUSAN WAVERLY

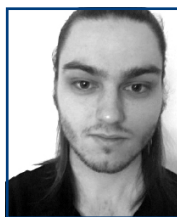
The Cast (Curve Young Company)



**YASMINA
BERRAOUI**



**ETHAN
BOSWORTH**



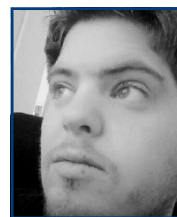
**DANIEL
BREWER**



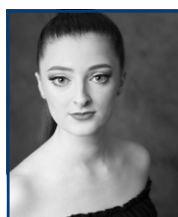
**CHARLOTTE
BURNETT**



**SAM
COOPER**



**JOHN
COUGHLAN**



**VICTORIA
COULTON**



**AIMEE
DAWSON**



**AMELIA
EATOUGH**



**LUKE
EVERED**



**GEMMA
FLEMING**



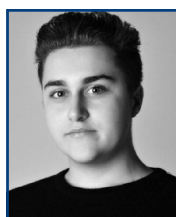
**BRANDON
FLETCHER**



**MATT
HARRISON**



**MIRA
HEMSLEY**



**MATT
HILTON**



**PAIGE
KIMBERLEY**



**PHOEBE
LEWIS**



**ELLE
MILFORD**



**ELLIE
PAGE**



**SARAH
RABIN**



**ERIN
SAUNDERS**



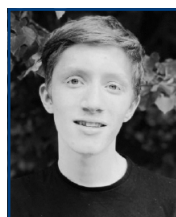
**SURAJ
SHAH**



**JOE
WALDEN**



**REBECCA
WILLIS**



**PATRICK
WORMLEIGHTON**

Production photos



Production photos



Irving
Berlin's

White Christmas

THE MUSICAL



We really hope that you enjoy the show!

If you have any questions before your visit, please call our **Box Office** on **0116 242 3595**. There will also plenty of staff on hand to help you on the day of the performance.

We look forward to welcoming you to Curve.

CURVE

TICKETS **0116 242 3595**
WWW.CURVEONLINE.CO.UK
CURVE THEATRE, LEICESTER



Supported using public funding by
**ARTS COUNCIL
ENGLAND**



Curve is run by Leicester Theatre Trust Limited, a registered charity (no. 230708). We gratefully acknowledge and welcome the continued support of and partnership with the above organisations.



It is your experience of the Relaxed Performance that we would like to know about, rather than **White Christmas** itself.

Online ☐ by Phone ☐ in person at the Box Office ☐

Yes ☐ No ☐

Yes ☐ No ☐

Yes ☐ No ☐

1 2 3 4 5
 (poor) (excellent)