

# CURVE

A CURVE &  
**ROSE**  
THEATRE  
KINGSTON  
PRODUCTION

IN ASSOCIATION  
WITH THE  
NATIONAL CENTRE  
FOR CIRCUS ARTS



By **Dr. Seuss**

## DR. SEUSS' THE CAT IN THE HAT

BASED ON THE BOOK BY **DR. SEUSS**

PLAY ORIGINALLY PRODUCED BY THE **NATIONAL THEATRE** OF GREAT BRITAIN

ADAPTED AND ORIGINALLY DIRECTED BY KATIE MITCHELL

DIRECTOR **SUBA DAS** DESIGNER **ISLA SHAW** MUSIC & ACCOMPANYING SONGS **TASHA TAYLOR JOHNSON** LIGHTING DESIGNER **ZOE SPURR**  
SOUND DESIGNER **DAVID GREGORY** ASSOCIATE DIRECTOR **JACK HORNER** CASTING DIRECTOR **KAY MAGSON CDG**

By arrangement with Josef Weinberger Limited on behalf of Music Theatre International of New York

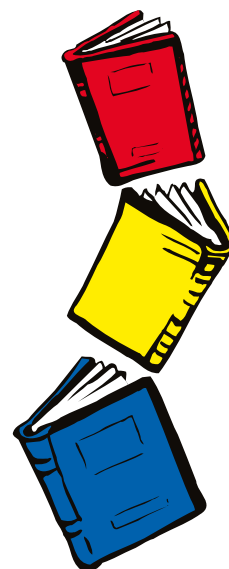
Dr. Seuss Properties TM & © 2018 Dr. Seuss Enterprises, L.P. All Rights Reserved

# Relaxed Performance Information Pack

Sunday 6 January, 3pm

# Contents

Page 3 - 4	About Curve
Page 5	Map of Curve
Page 6 - 7	The Performance
Page 8	The Story
Page 9	The Cast
Page 10 - 11	Production Images
Page 12	Back Cover
Page 13	Feedback Form



## Hello

We are looking forward to welcoming you to Curve for the **Relaxed Performance** of **Dr Seuss' *The Cat in the Hat***. We hope that you are excited to see the show!

Our Relaxed Performances are tailored for customers who benefit from a more informal performance environment. Audiences are allowed to make noise, and to come and go from the auditorium if they need a break from the performance.

This pack is designed to give you a bit more information about what to expect during your visit to Curve.



# About Curve

Curve is a large, round building with a glass front. There are three main entrances into the building – one by our **Green Room Café** (Halford Street), another by our **Stage Door Bar** (Rutland Street) and the third is in the middle of the two (Southampton Street).



Our **Foyer** is one big circle which goes around our two performance spaces – the **Theatre** and the **Studio** – so it's easy to find your way around.

As you walk around our Foyer you will also notice lots of large pictures on the big red walls. This is our **Production Gallery**, and features pictures from previous productions here at Curve. You can pick up a gallery guide from the leaflet racks around the building to learn more about the shows included in this exhibition.





Just off the Foyer inside the Rutland Street doors, you will find our **Box Office**. You can collect your tickets for the show here if you haven't already printed them, and this is also the place to validate your car parking ticket at a reduced rate of £5.50.



In the Foyer you will also find our **Green Room Café** and **Stage Door Bar**, which sell a range of food, drinks and treats to enjoy during your visit.



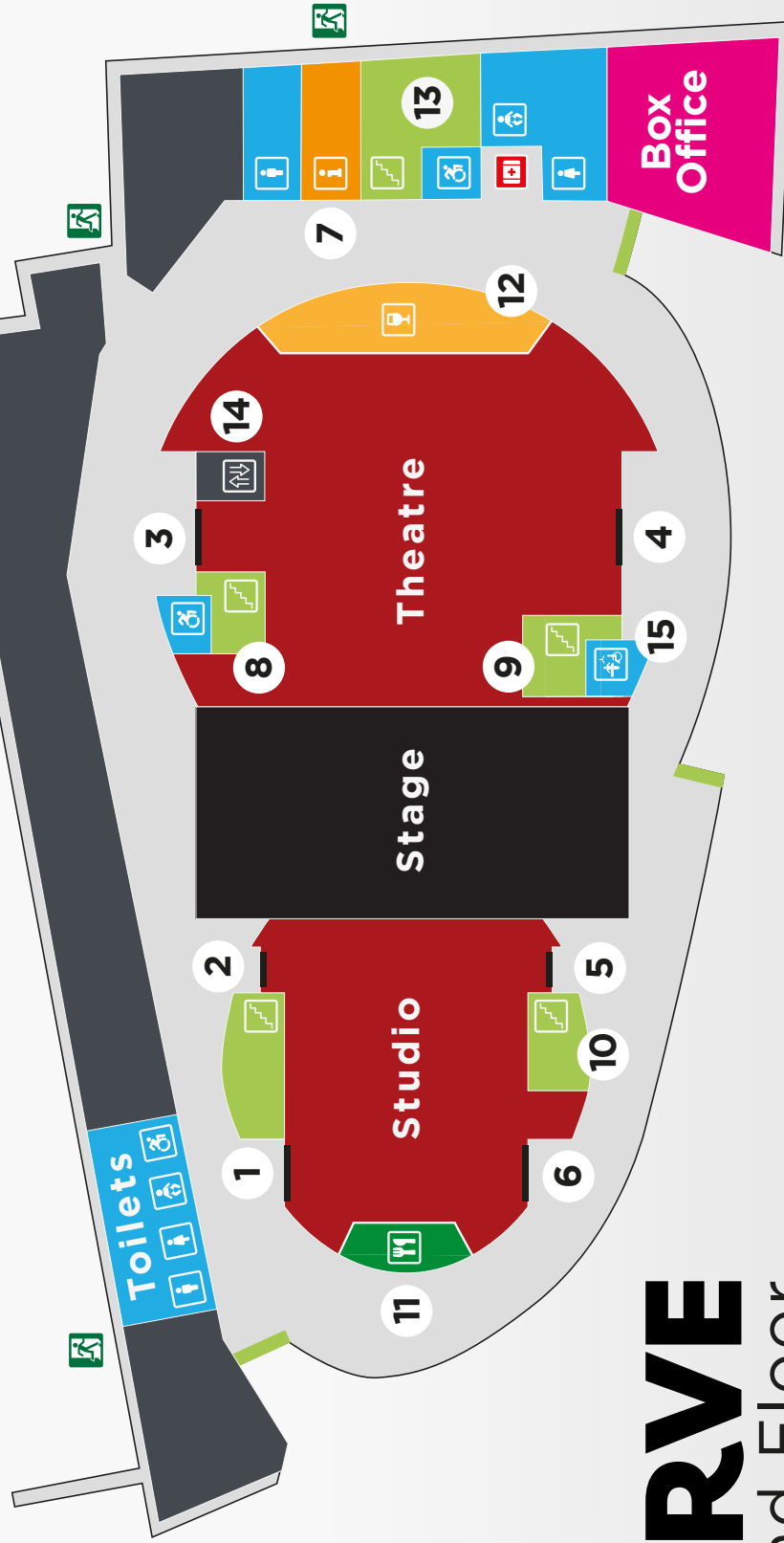
You can find toilets on all levels of the building. On the ground floor (stalls level), male, female and accessible toilets are located between our **Stage Door Reception** and **Box Office**, and close to our café. There are two more accessible toilets, one by **Door 3** and one by **Door 4**. The accessible toilet by **Door 4** is also a **Changing Places Toilet**, which has an adult changing table and assistive hoist. Hand dryers will be turned off in the toilets to reduce the noise levels on the day.

**See page 5 for a map of our theatre.**



**NCP**

**Car Park**



# CURVE

## Ground Floor

**1** Studio Door 1

**2** Studio Door 2

**3** Theatre Door 3

**4** Theatre Door 4

**5** Studio Door 5

**6** Studio Door 6

**7** Reception

**8** Stairs to Theatre Door 8

**9** Stairs to Theatre Door 9

**10** Stairs to Studio Door 10

**11** Green Room Café

**12** Stage Door Bar

**13** Stairs Mezz & RR2

**14** Lift

**15** Changing Places Facility

# The Performance

## Before the show

Before all of our shows, we make audio announcements in the Foyer to give customers useful information, such as how long it is until the show begins or where to take your car parking ticket to be validated. During a Relaxed Performance, we will only make necessary announcements and these will be at a lower volume than normal.

This performance of ***The Cat in the Hat*** will take place in our **Studio**. The Studio is our smaller performance space here at Curve, but there is still space to move around. You will be sat in the Stalls (the lower part of the Studio) accessible via door 1 or 6, or in the Balcony (the upper part of the Studio) accessible via Door 10. Your ticket will tell you which door to enter through, but if you need any help our Visitor Experience Team are on hand to point you in the right direction.

The Studio doors will be opened much earlier than usual to give you a chance to explore and settle into the space. If you have bought a drink from the café or bar, you are welcome to bring this into the Studio with you.

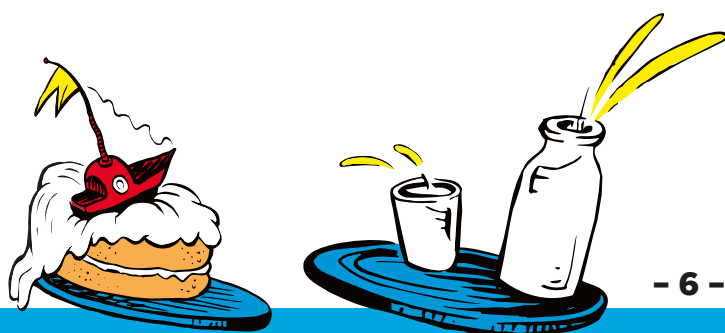
If you have a drink in a glass or glass bottle, please ask a member of our team to pour this into a plastic cup before entering the auditorium. Or if you're warming up with a hot drink, please ask for lid instead.

## Inside the Studio

When you first go in to the Studio, the lights will be on so that you can find your seats easily. Your seat will be shown on your ticket, indicated by a letter and a number (for example J4, D7 etc). When the performance is about to begin, we will dim the lights but it will never go completely dark.

It can be a little noisy whilst people are entering the Studio and finding their seats, as the audience will be excited to see the show. You might like to bring some ear defenders to wear during this time to make the noise levels more comfortable, as well as a toy to play with before the performance.

Just before the show starts, some of the actors will come on stage and say hello. This reminds the audience that the cast are just actors having fun whilst telling you a brilliant story through words, song and dance.



## During the show

The main thing to remember about a Relaxed Performance is that no one has to sit still and be quiet, and you are welcome to make noise if you'd like.

You can leave the Studio at any time during the performance. A member of our Visitor Experience Team will always be at the door to help you exit the Studio, and will let you back in when you are ready to return to the show. If you would like to have a break from the show, you can visit our quiet space on the Central Mezzanine on level 'M'.

## Useful Information about the Performance

***The Cat in the Hat*** is a really fun show, featuring circus performers, acrobatics, juggling and more! The show is also full of rhyme and humour, which means that the actors will speak in a different way to normal.

There will be plenty of opportunities to interact with the characters during the performance, so make sure your voice is nice and loud!

Amongst the fun, there are some moments and effects that some audience members may find uncomfortable. These include:

- Our cheeky characters will begin the show amongst the audience holding water pistols, so you might get a little bit wet!
- There are a couple of further moments throughout the show where the characters will run around the auditorium, getting close to the audience. Half-way through Act 2, one character will also run through the audience in the balcony.
- We have made slight changes to the show's lighting and sound throughout, so that there are no surprises or sudden loud noises during the performance.

If you have any further questions about the content of the performance, please call our Box Office team on 0116 242 3595.

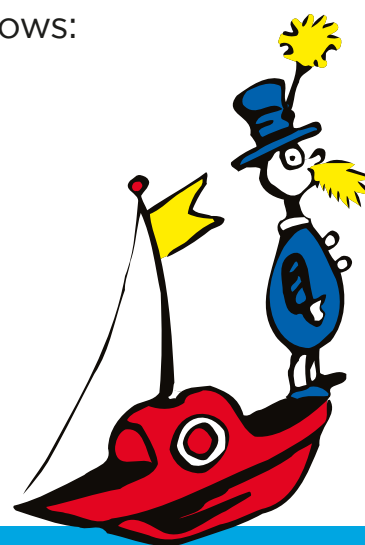
The running times for the performance are as follows:

**Act 1 - 35 minutes**

**Interval - 20 minutes**

**Act 2 - 35 minutes**

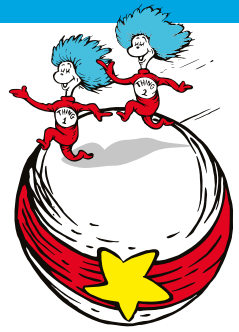
**Total running time: 1 hour 30 minutes**





# ***The Cat in the Hat***

## **The Story**



Here is a simple summary of the plot of ***The Cat in the Hat***. It's important to remember that the actors are playing parts to tell the story, so if you see people looking sad or upset, or looking like they get hurt, don't worry – the actors are only pretending.

The show is set in **Sally** and **her brother**'s home on a rainy day whilst their mum is out. Left alone, Sally and her brother get a little bored. They are having a very dull day.

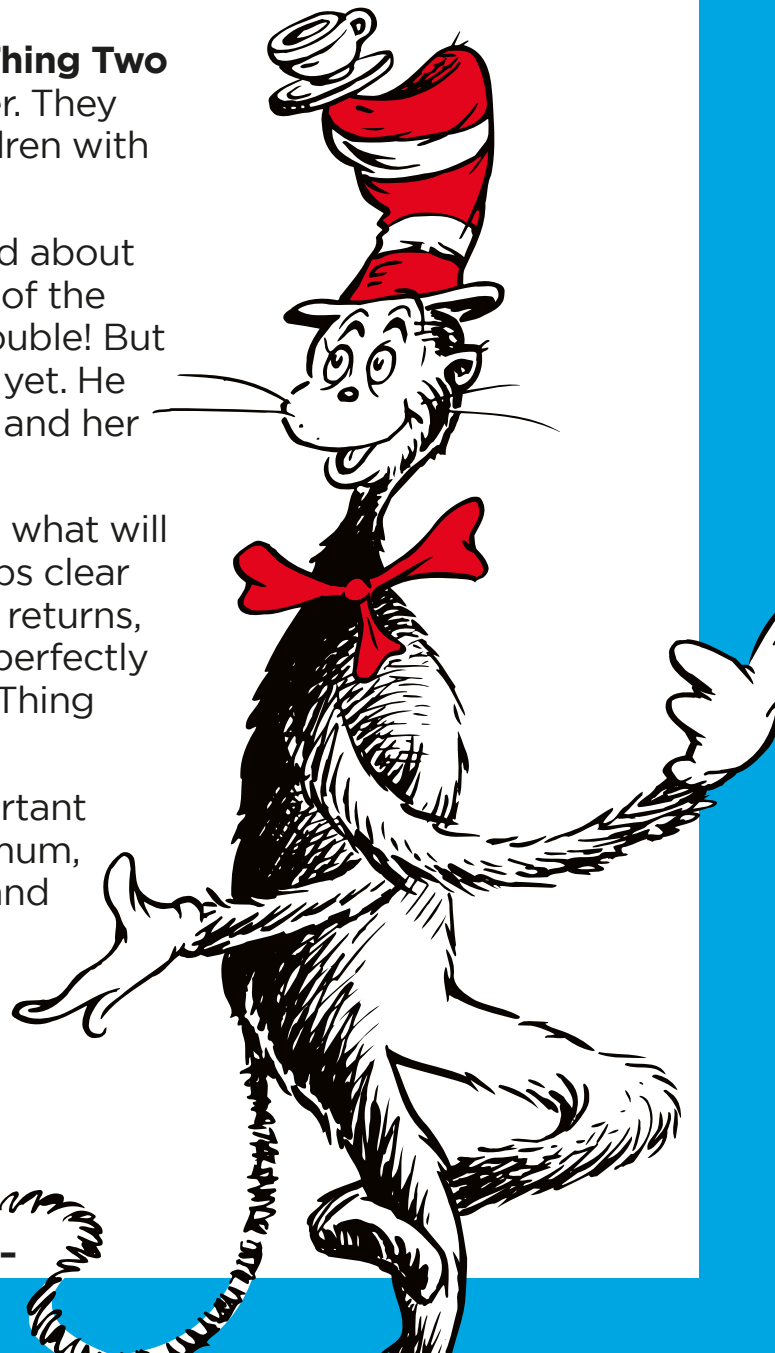
Out of nowhere, the **Cat** – wearing a red and white striped hat – arrives to cause mischief and show the children how to have fun! This Cat is silly, causing mayhem everywhere. The Cat tries to balance too many things, and drops a lot of toys.

In comes his friends **Thing One** and **Thing Two** to help entertain Sally and her brother. They make a big mess but delight the children with acrobatics and juggling.

The pet **Fish** is a little more concerned about the mess in the house and the safety of the children. Oh no, what if they get in trouble! But the Cat does not care about that just yet. He goes on to have lots of fun with Sally and her brother.

But wait! Their mum is returning now, what will they do?! Before the Cat goes, he helps clear up his mess so that when the mother returns, nothing is amiss. The house appears perfectly tidy, as if the Cat and Thing One and Thing Two were never there.

The show ends asking the most important question – what would you tell your mum, if a giant cat in a hat and Thing One and Thing Two came to play all day?





# The Cast



**Cat**

Played by **Nana Amoo-Gottfried**



**Fish**

Played by **Charley Magalit**



**Sally**

Played by **Melissa Lowe**



**Boy**

Played by **Sam Angell**



**Thing 1**

Played by **Celia Francis**



**Thing 2**

Played by **Robert Penny**

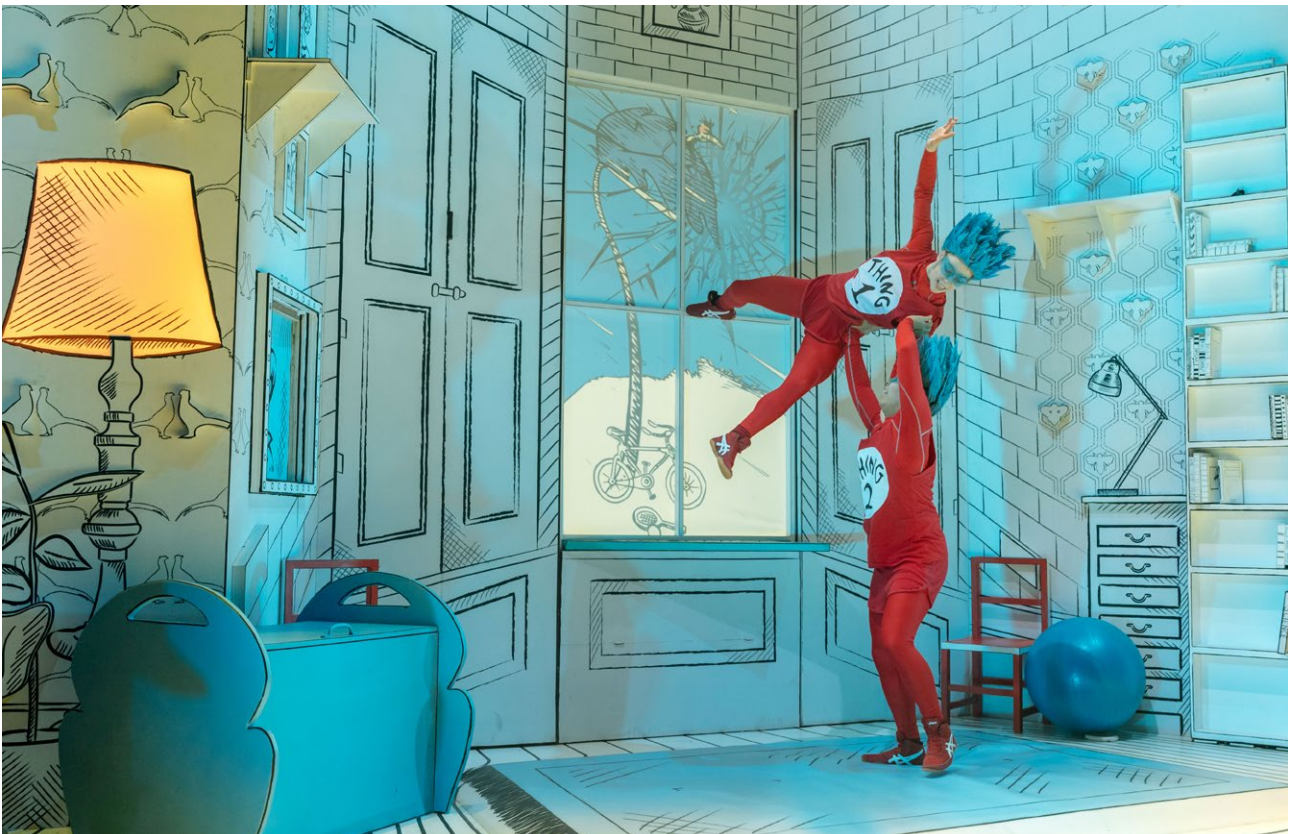


# Production photos





# Production photos



# CURVE



## DR. SEUSS' THE CAT IN THE HAT

BASED ON THE BOOK BY DR. SEUSS  
PLAY ORIGINALLY PRODUCED BY THE NATIONAL THEATRE OF GREAT BRITAIN  
ADAPTED AND ORIGINALLY DIRECTED BY KATIE MITCHELL

DIRECTOR SUBA DAS DESIGNER ISLA SHAW MUSIC & ACCOMPANYING SONGS TASHA TAYLOR JOHNSON LIGHTING DESIGNER ZOE SPURR  
SOUND DESIGNER DAVID GREGORY ASSOCIATE DIRECTOR JACK HORNER CASTING DIRECTOR KAY MAGSON CDG

By arrangement with Josef Weinberger Limited on behalf of Music Theatre International of New York

Dr. Seuss Properties TM & © 2018 Dr. Seuss Enterprises, L.P. All Rights Reserved

We really hope that you enjoy the show!

If you have any questions before your visit, please call our **Box Office** on **0116 242 3595**. There will also plenty of staff on hand to help you on the day of the performance.

We look forward to welcoming you to Curve.

# CURVE

TICKETS **0116 242 3595**  
**WWW.CURVEONLINE.CO.UK**  
CURVE THEATRE, LEICESTER



Supported using public funding by  
**ARTS COUNCIL  
ENGLAND**



Curve is run by Leicester Theatre Trust Limited, a registered charity (no. 230708). We gratefully acknowledge and welcome the continued support of and partnership with the above organisations.





It is your experience of the Relaxed Performance that we would like to know about, rather than ***The Cat on the Hat*** itself.

Online ☐ by Phone ☐ in person at the Box Office ☐

---

Yes ☐ No ☐

Yes ☐ No ☐

Yes ☐ No ☐

---

---

---

---

1            2            3            4            5  
(poor)                                  (excellent)